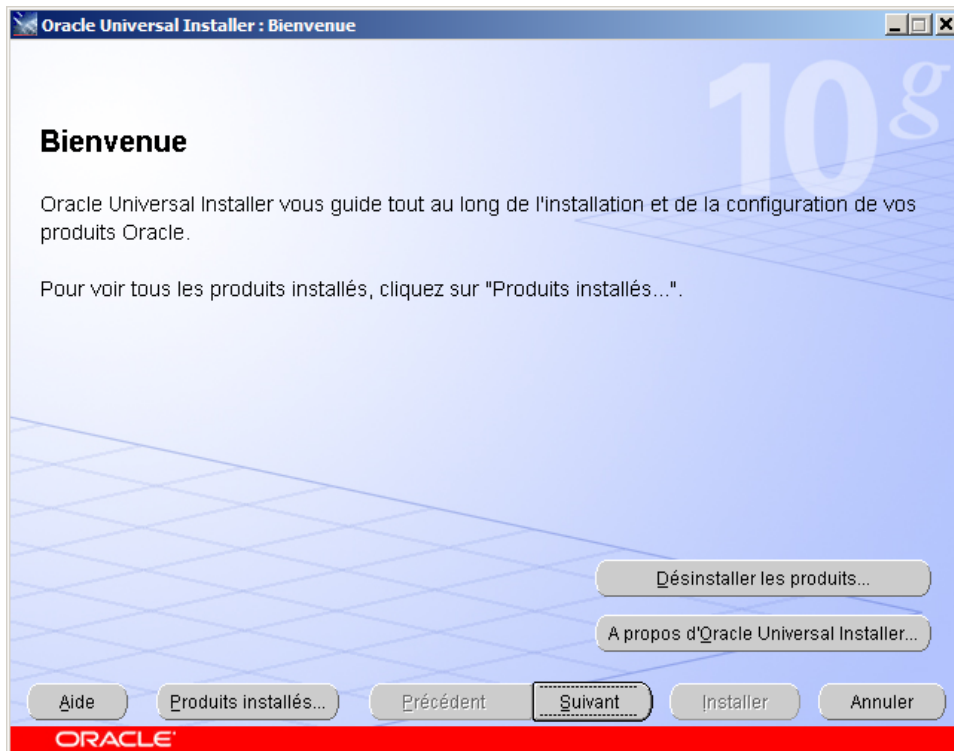
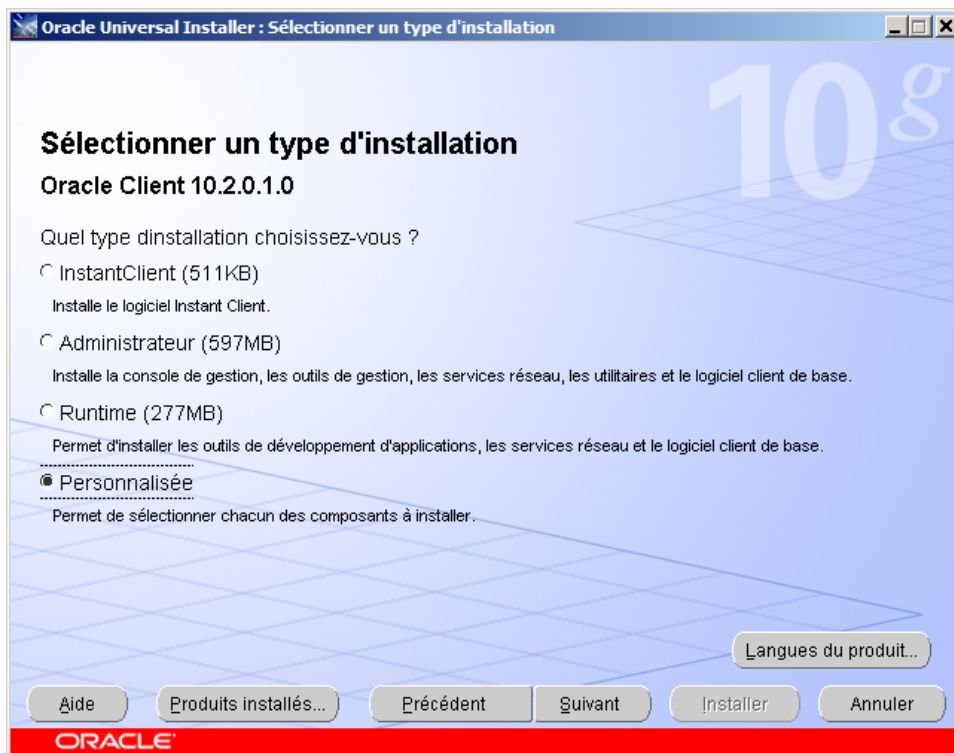


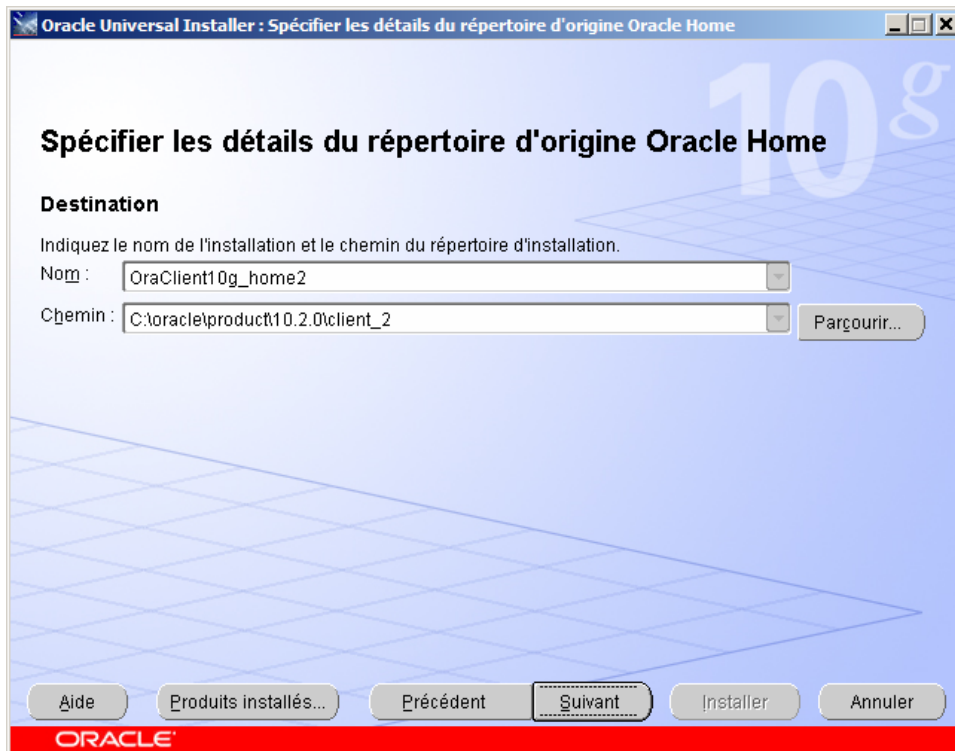
Installation d'Oracle 10G client



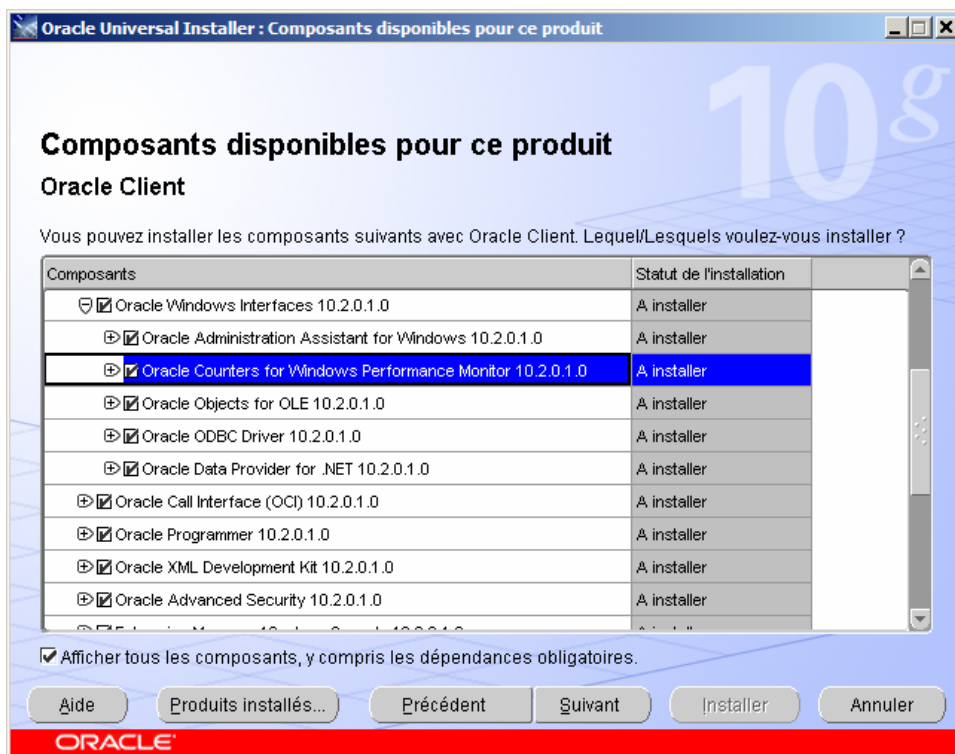
Cliquer Suivant



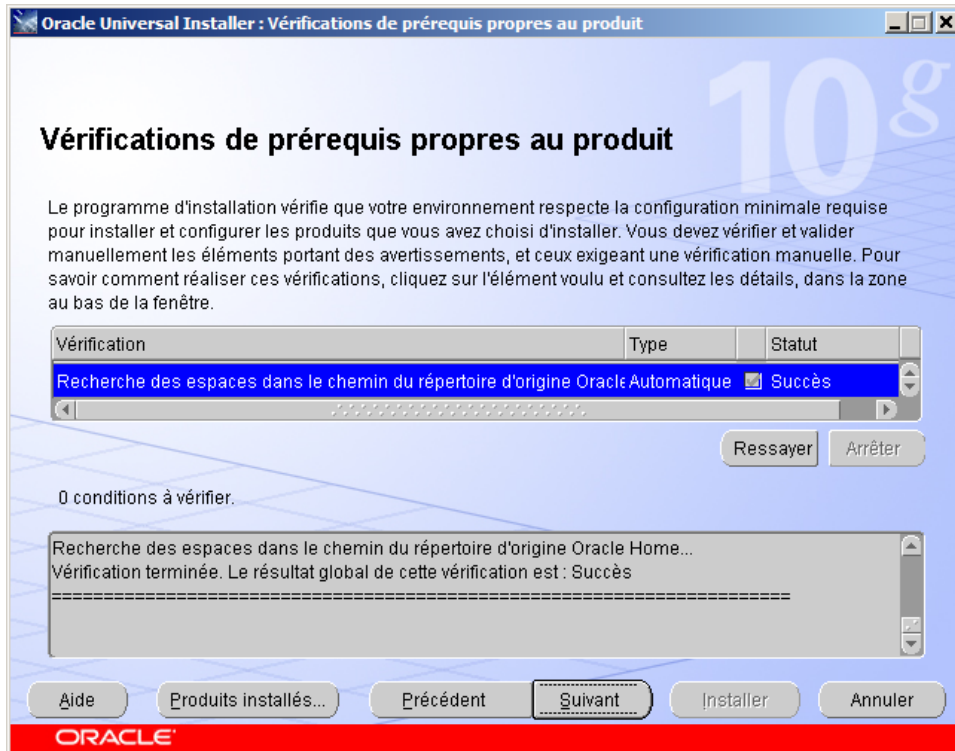
Choisir Personnalisée et Suivant



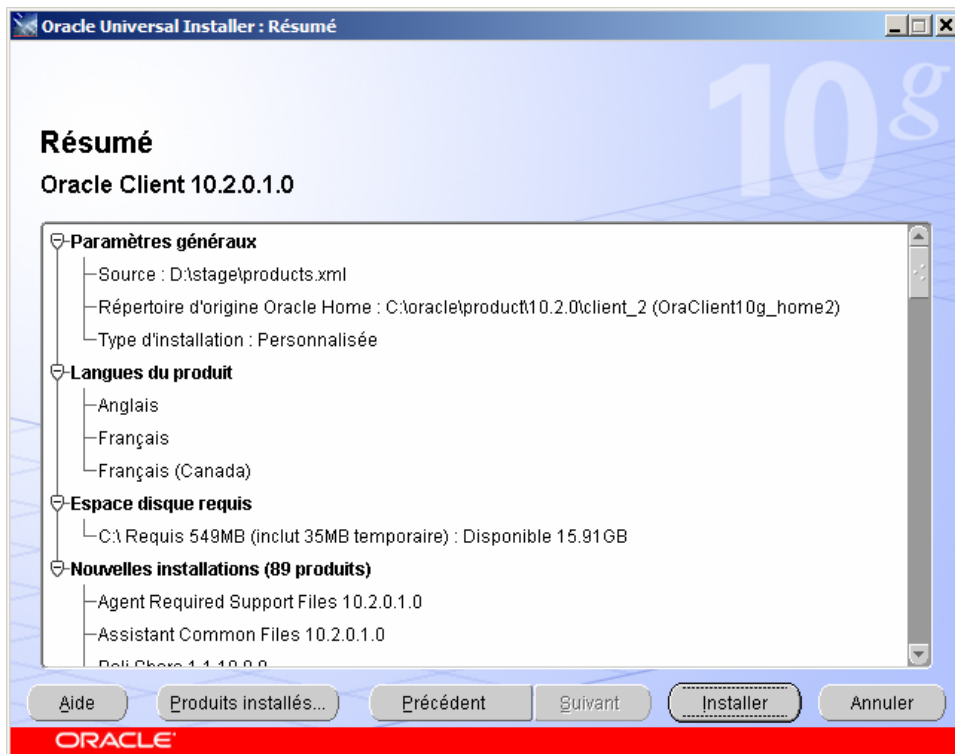
Cliquer Suivant



Sélectionner tous les produits et cliquer Suivant

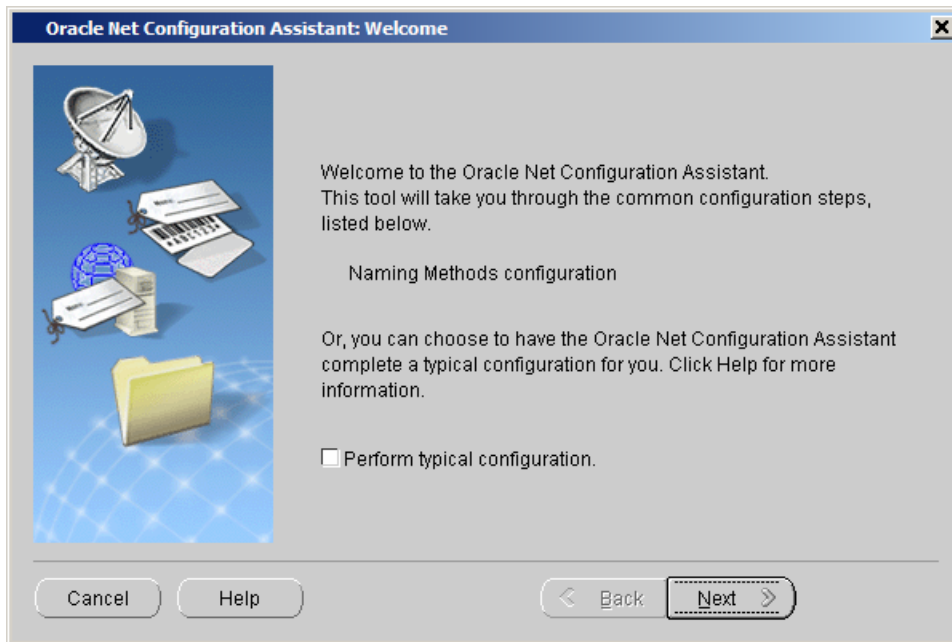


Cliquer Suivant

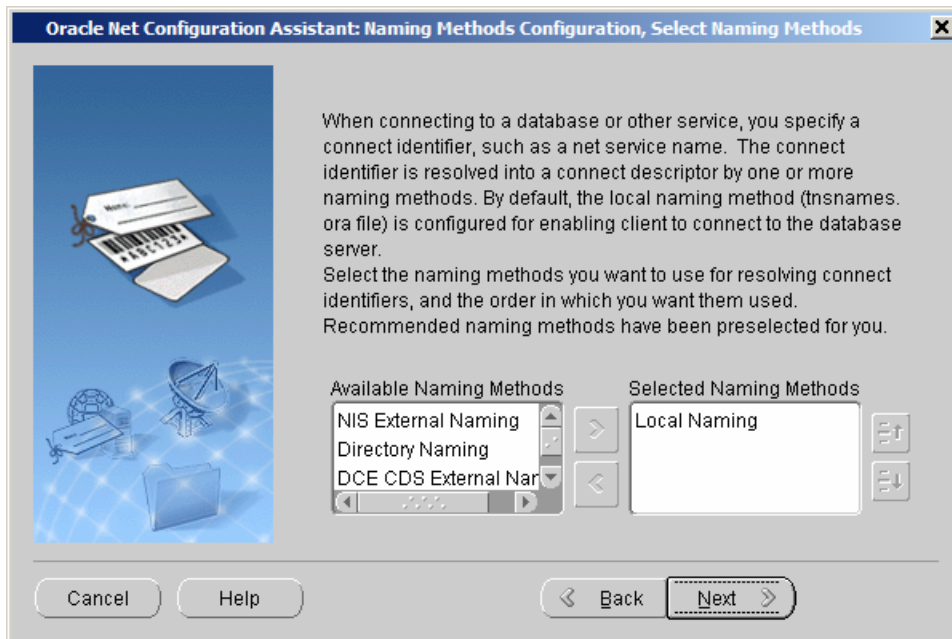


Cliquer Installer

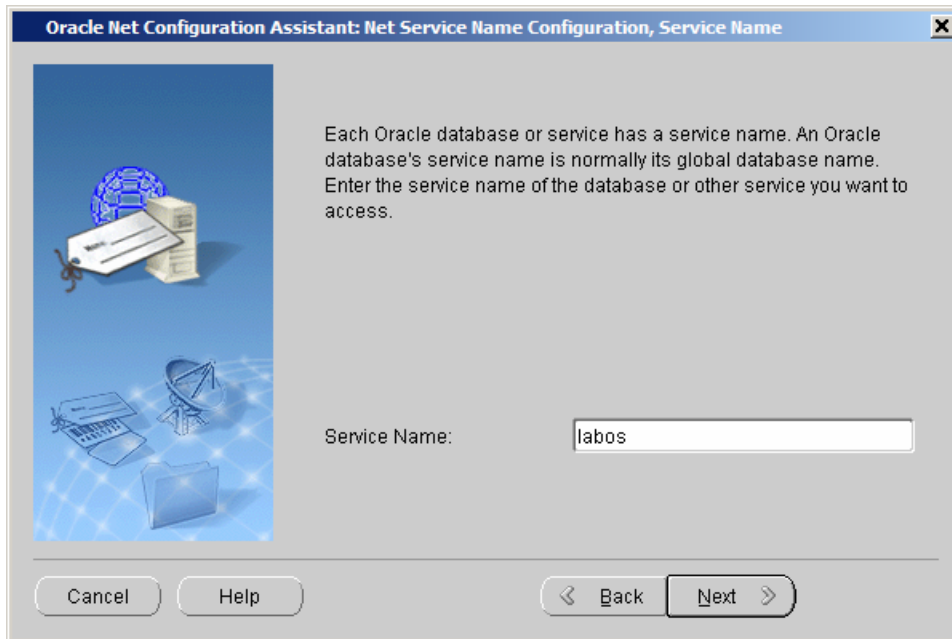
Configuration du client Oracle 10G



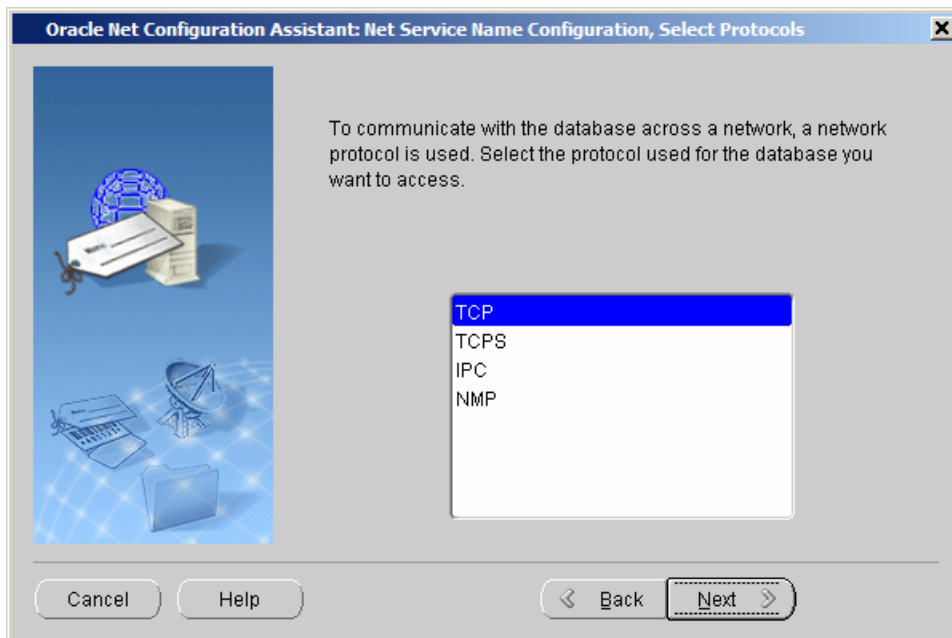
Cliquer Next



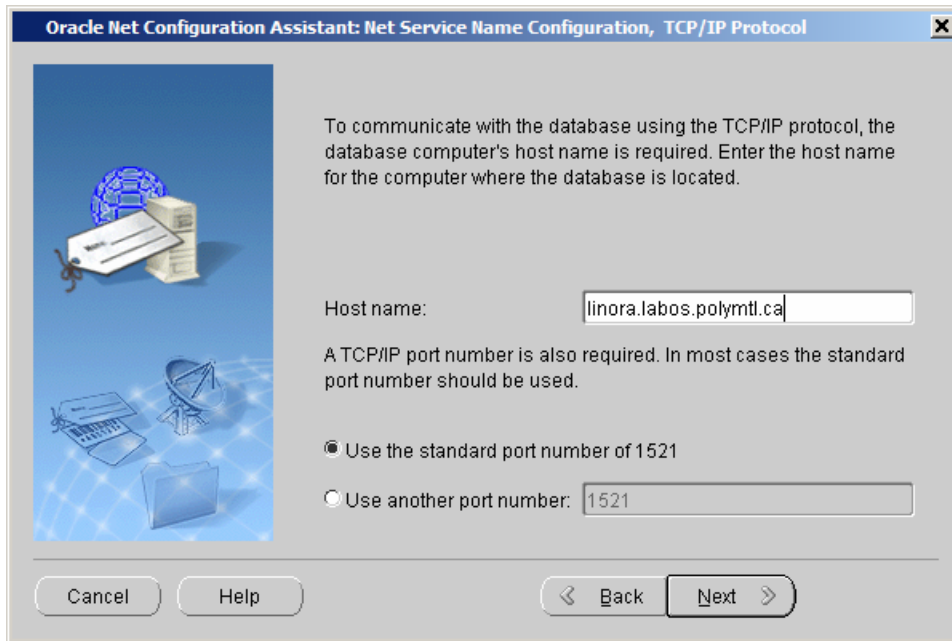
Cliquer Next



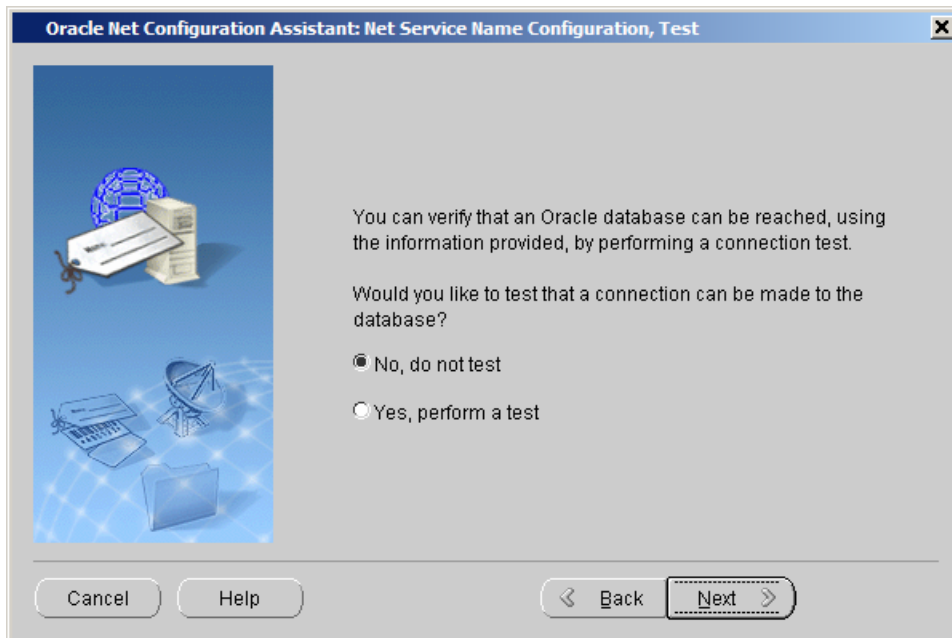
Entre labos et cliquer Next



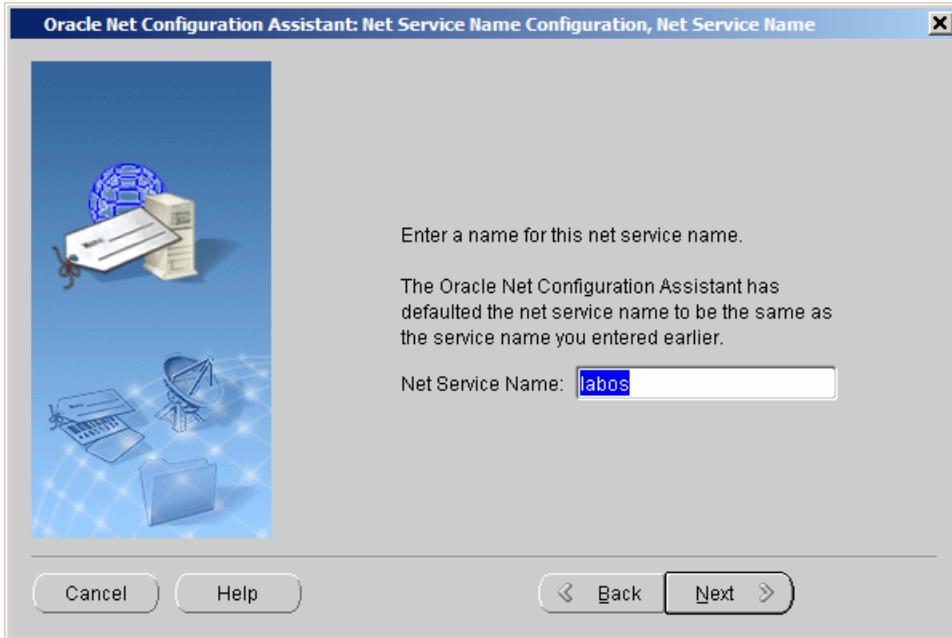
Cliquer Next



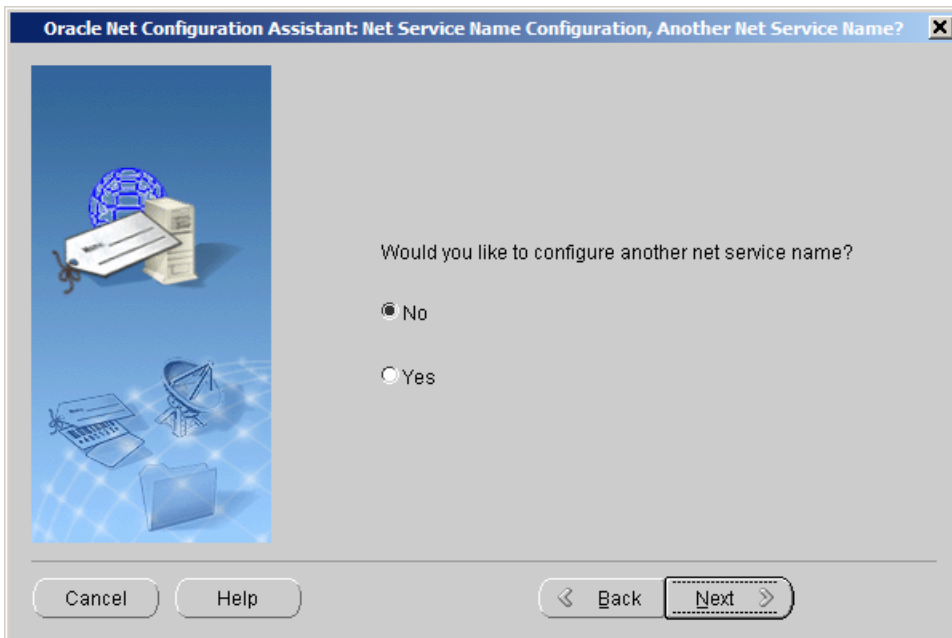
Entrer linora.labos.polymtl.ca et cliquer Next



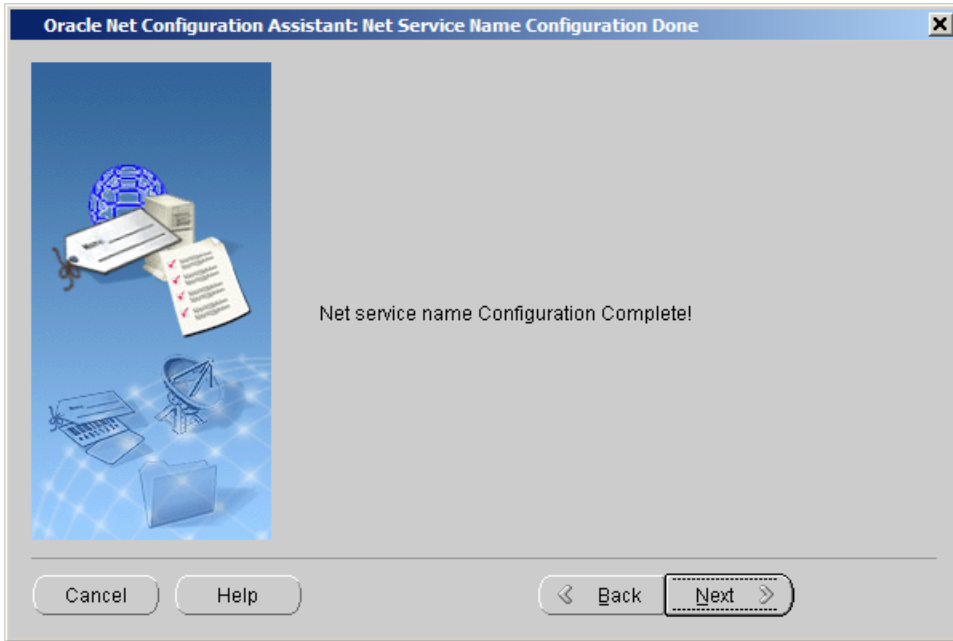
Cliquer Next



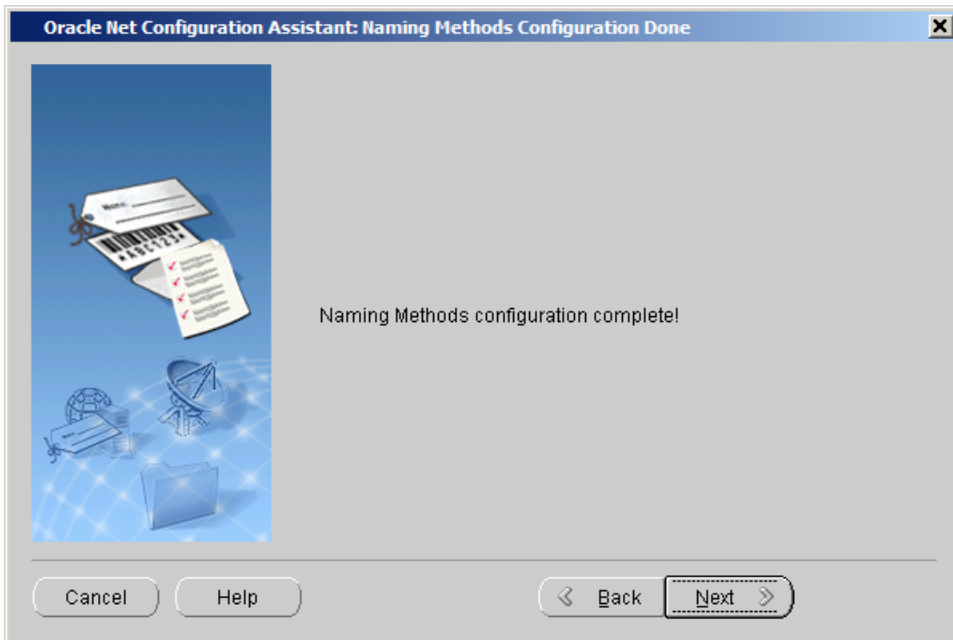
Cliquer Next



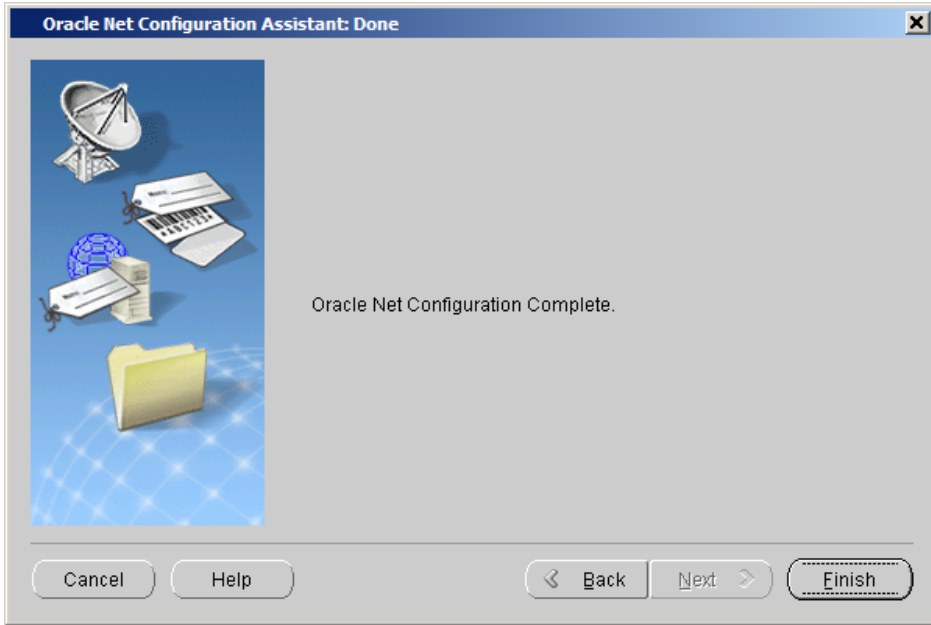
Cliquer Next



Cliquer Next



Cliquer Next



Cliquer Finish